

SalonSERVE®

Installation and User Guide



A professional ozone aromatherapy steamer.

- Ozone aromatherapy.
- RoHS and CE standards.
- Sturdy height adjustable stand.
- Rotating nozzle.
- Strong easy to attach screw-on plastic jar.
- Easy to refill from the top of the steamer.
- Extra long power lead for easy movement.
- Aromatherapy disposable filter option; easy to use and change. Personalise each facial to suit your clients skin type.

Swan Steamer

SEQ902

Salonserve Swan Steamer with aromatherapy filter



Contents

Introduction	3
Safety requirements	3
Specifications	4
Assemble the floor stand	4-6
Precautions	6
Main controls	6
Main parts	7
Procedure	7
Trouble shooting	9
Care and maintenance.....	8-9
Frequently asked questions	9

Introduction

Thank you for buying the Salonserve Swan Steamer.

Your Salonserve Swan Steamer is a simple, lightweight steamer, offering ozone function and aromatherapy steam treatment. The steamer has simple push buttons and is easy to clean as the aromatherapy nozzle is on the outside of the machine.

The steamer can be used in a variety of face and body treatments thus enabling you to offer a selection of moisturising and relaxing treatments to your clients. Steaming treatments are used mainly on the face, hands and back but can also be used anywhere that needs to be warmed or thoroughly deep cleansed. The heat produced has a wonderful analgesic effect and is helpful when used before massage. It will also improve the condition of oily, combination skins and help slough away dry scaly skin.

This manual is designed to help you install and use your Salonserve Swan Steamer. Please make sure you have read and understood this guide before attempting to use this steamer.

Please be aware that it is your responsibility to comply with any national or local regulations e.g. Health & Safety at Work.

If after reading this and the user manual you have any questions, please call Salonserve on 01933 410022.

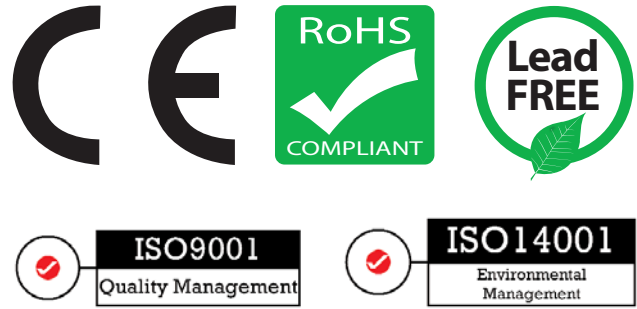
Safety requirements

1. As with all steamers of this type, **DESCALE YOUR UNIT ON A REGULAR BASIS**. Allowing scale build up can place an unnecessary burden on the heating element that can lead to overheating and failure of the unit. In these circumstances your steamer is not covered by the warranty.
2. Please make sure that you are aware of the power cord at all times and position it to avoid trips and hazards.
3. Do not use outdoors.
4. Do not use in dusty, wet, high humidity or slippery conditions.
5. Ensure all users have read and understood these operating instructions.
6. Ensure that all the electrical specifications and local regulations are met.
7. To avoid damage to the plug or cable, please place the power cord in an appropriate position.
8. Please ensure all the warning symbols are clearly visible. If a warning symbol has been lost or becomes illegible please call for a free replacement.
9. Do not allow children to use this steamer.
10. Inspect the unit before every use. Do not use your Salonserve Swan Steamer with worn or damaged parts.
11. Keep the unit away from any other heat sources.



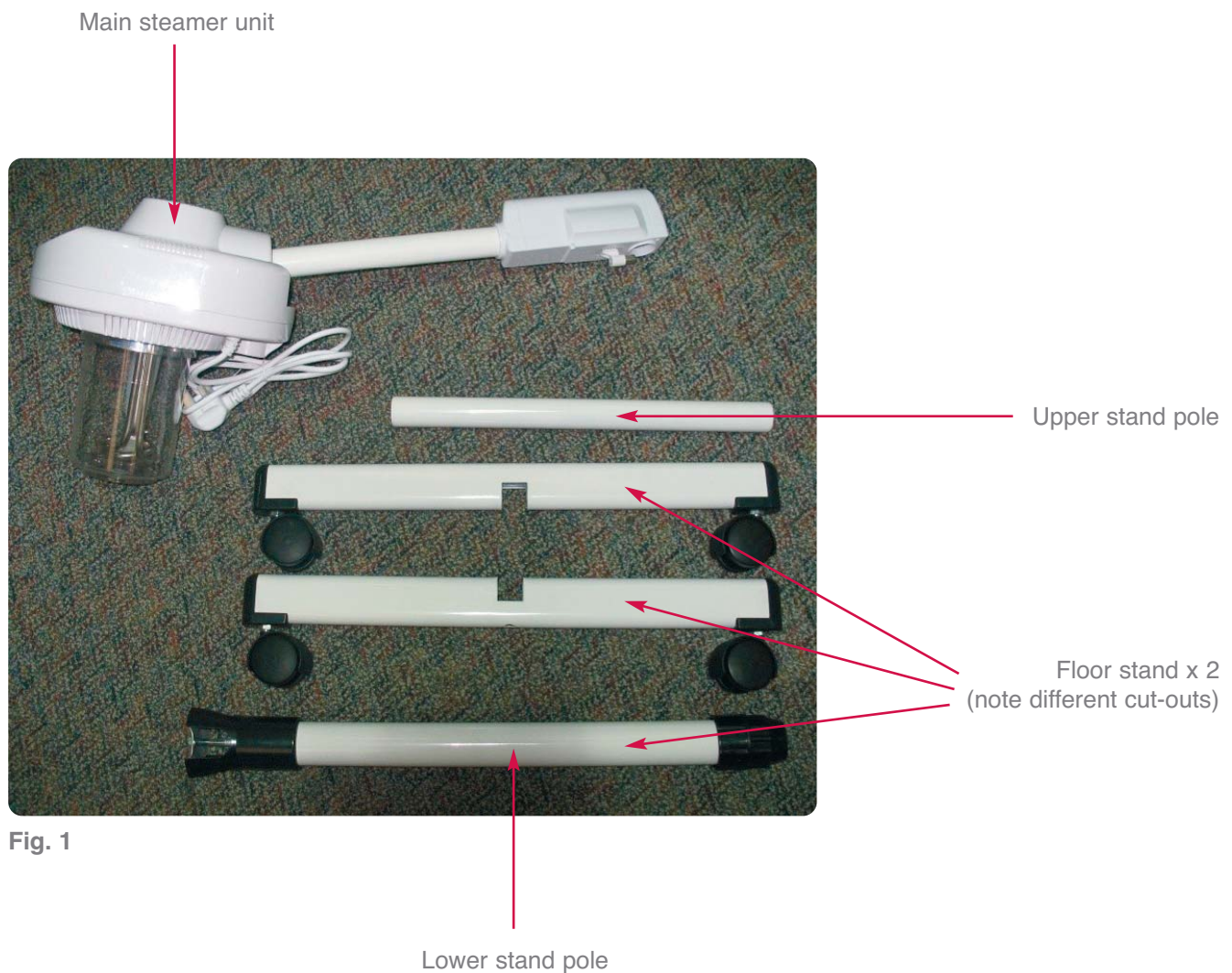
Specifications

Model	Salonserve Swan Steamer
Code	SEQ902
Power supply	50/60Hz
Voltage	230/240 VAC
Power	750 watts
Main fuse rating	13 amps



Assemble the floor stand

Please identify the following parts:



1. The lower stand pole has parts attached.



Fig. 2

2. Please remove the bolt from the bottom of the lower stand pole.



Fig. 3

3. Place the 2 floor stands in this position i.e. connected in the middle.



Fig. 4

4. Assemble the floor stand and tighten the bolt.



Fig. 5

5. Please make sure that the special shaped washer is correctly located so that the floor stand looks like this and feels secure.



Fig. 6

6. Please stand the floor stand up.



Fig. 7

- Gently push the upper stand pole into the stand. If it does not fit, loosen the locking nut by turning it in an anti-clockwise direction and tighten with the upper stand pole in position.



Fig. 8

- Simply locate the upper stand pole to the hole in the bottom of the main steamer unit.



Fig. 9

Precautions

USE ONLY DE-IONISED WATER IN THIS STEAMER.

- Check that there is enough de-ionised water in the jar before commencing treatment.
- Cover client's eyes with damp cotton wool pads.
- Always dispose of herbal infusions after treatment.
- Cover up any areas not receiving treatment.
- Always check over client's skin for any contra indications before beginning treatment.
- Ensure the steamer is positioned correctly and safely so that it cannot be overturned or damaged.
- Ensure all client's jewellery is removed before commencing treatment.

Main controls

Fig. 10



Steam ON

Ozone OFF

Steam OFF

Ozone ON

Main parts



Fig. 11

Water fill hole
(plug removed)



Fig. 12

Steam Out

Infuser

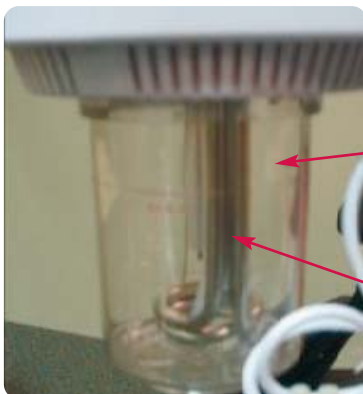


Fig. 13

Procedure

PLEASE NOTE:

- A. You can use de-ionised water or tap water. Please note, you must do a regular lime scale treatment. Failure to do this will invalidate your warranty.
- B. Fill the jar from the top water fill hole (Fig. 11). (Do not remove the jar to fill). Fill until the upper MAX mark on the jar is reached.
- C. To use the easy to clean aromatherapy nozzle, either use a Salonserve Aromatherapy Filter or simply insert a rolled up cotton wool disc dipped in the oil of your choice, into the special metal receptacle shown in Fig. 12. Never put oils inside this steamer.
 1. Make sure client is in a semi-upright, well supported position.
 2. Remove all jewellery and check for contra indications.
 3. Ensure water level is on GOOD and switch on machine to warm up for a few minutes. Add herbal infusion if required.
 4. Perform double cleanse then do a skin assessment on the client and discuss an appropriate treatment plan.
 5. Exfoliate the skin well, then apply a nourishing cream or oil to the skin if treating dry or dehydrated skins. Leave the skin bare if it is oily or congested in any way.
 6. Cover client's eyes with damp cotton wool pads. Care must be taken to avoid client's eyes during the treatment.
 7. Position the steamer 12-15 inches from the client's face depending on her skin type and tolerance.
 8. Steam for between 5-25 minutes depending on client's skin type and the desired effect. Reduce time if ozone is used and position steamer 18 inches away from client.
 9. Once finished, switch off and remove steamer to a safe distance.
 10. Now commence rest of facial treatment. Extractions can be performed at this point, followed by more electrical treatments or manual massage.

Trouble shooting

■ The steamer 'beeps'

If the water level is not covering enough of the element the steamer will automatically stop and beep to remind you to refill it. The steamer features a safety cooling system that takes about 10 minutes to reset.

To correct: Fill with water and leave for 15 minutes, then restart the steamer.

■ The steamer continually beeps with water at the correct level.

If the water jar is not correctly positioned the steamer has a safety cut-off and beeper warning to warn you.

To correct:

1. Turn the steamer OFF and remove the plug from the wall socket.
2. Completely unscrew the jar (Fig. 13) anticlockwise to loosen.
3. Empty the water from the jar.
4. Turn the steamer upside down.
5. Carefully align the plastic grooves of the jar and the steamer base.
6. Twist the jar clockwise to tighten.

■ The steamer spits

Spitting is due to inappropriate use of normal tap water or oils in the water system.

To correct: Cleaning may help. Try a strong white vinegar solution. This should reduce the lime scale or oil that is "holding" the water that is spat out.

■ The steamer will not start

To correct: Check fuse and ensure wires or plug are not damaged.

Care of your steamer

It is your responsibility to keep the unit clean and maintained.

Please inspect the unit before every use. Do not use your Salonserve Swan Steamer with worn or damaged parts. Parts must be replaced and not repaired. Only use genuine Salonserve parts.

You will be subject to local laws and regulations whilst you are using your Salonserve Swan Steamer in a professional environment e.g. Health and Safety legislation. It is your responsibility to ensure compliance of these regulations.

Keep the glass water jar clean. Clean on a weekly basis with a white vinegar solution, this will reduce lime scale and prolong the life of your element.

Clean the unit with a damp soft cloth.

Keep the unit away from any other heat sources and children.

Do not let the water drop below the element in the water jar as this may lead to uneven automatic cut out.

Always screw and unscrew water jar gently to avoid over tightening the jar leading to breakages.

PLEASE NOTE:

1. DO NOT FILL THE STEAMER BY REMOVING THE JAR, ALWAYS FILL FROM THE TOP.
2. REGULARLY DE-SCALE YOUR STEAMER.
3. DO NOT PUT OILS IN THE WATER.

In all eventualities if you have any questions please call Salonserve.

Performing a lime scale removal treatment

1. Use white vinegar. Fill the jar half way with the white vinegar. Ensuring the element is completely covered.
2. Turn the steamer on and allow the white vinegar to boil for 3 minutes.
3. Leave the steamer to stand and cool for about 1 hour (ensure it is not hot before removing jar).
4. Remove the jar and dispose of vinegar. Rinse out all traces of vinegar, wash with a detergent solution and rinse. Dry using a paper towel.
5. Wipe the element over, checking there is no trace of lime scale left. If there is lime scale on the element repeat the procedure.
6. Fill the jar with water and boil through repeatedly until there is no trace of the smell of vinegar.

How often should you do a lime scale treatment?

Lime scale can ruin a steamer and cause many internal problems which can lead to the steamer burning out and parts melting. Lack of regular lime scale treatments will invalidate your warranty. They are essential if you want your steamer to maintain its performance.

If you are in a hard water area you will need to do this more often than if you are in a soft water area.

If your steamer is used every day then you will have to do it more often than if it is used once a week.

With regular use we recommend that lime scale treatment is performed weekly or as soon as you see white lime scale build up on the jar or on the element. You have left it too late if the lime-scale is hard and crusted on.

Frequently asked questions

1. Should I remove the plastic tubes that are inside the jar?

Answer:

These are working parts of the steamer and should NOT be removed.

2. How do I use aromatherapy oils with the steamer?

Answer:

Near the nozzle you will find a small metal cylinder, either use a Salonserve Aromatherapy Filter or simply dip a rolled up cotton wool disc into the oil of your choice and insert back into cylinder opening.

3. How long should I steam someone for?

- Combination skin types..... 15-20 minutes
- Ageing skin 15-20 minutes
- Oily skin 10-15 minutes
- Acne prone skin 7-10 minutes

4. What essential oils are good to use?

Answer:

- Calming oils
- Chamomile, lavender, rose, balm mint, mallow and yarrow
- Stimulating oils
- Mint, eucalyptus, rosemary, lemon, vetivert, grapefruit

5. Are there any contra-indications to steaming?

Answer:

Yes, be aware of the following:-

1. Skin diseases or disorders.
2. Highly vascular, florid or couperosed skins.
3. Rosacea.
4. Cuts and abrasions.
5. Any skin or nail infection.
6. Lack of normal skin sensation
7. Highly sensitive skins.

6. What effects can I expect on the skin?

Answer:

1. Induces muscle relaxation.
2. Raises the skin temperature.
3. Increases circulation to the area.
4. Increases metabolic rate of skin.
5. Soothes sensory nerve endings.
6. Softens skin and opens pores.
7. Eliminates impurities through enhanced waste removal.
8. Stimulates sebaceous glands.
9. Increases lymph removal.

