

SEQ943 User Manual

SalonSERVE®



**TABLE TOP FACIAL STEAMER**  
PROFESSIONAL EQUIPMENT  
FOR SALON AND SPA

Salonservice Hair & Beauty Supplies  
Lexicon House, Station Road, Irthingborough,  
Northants, NN9 5QF  
01933 410022  
www.salonservice.com

**Safety Precautions and Warning**

To ensure proper operation of this appliance, please read all the safety precautions carefully before use. The safety precautions are provided to help you with the safe operation of this appliance so that you can avoid injuries to yourself and others. The safety precautions are defined as follows.

**Specification parameters**

Rated Voltage	110V □ / 220V □
Electric Power	350W
Rated Frequency	60HZ □ / 50HZ □
Water Capacity	400ML
Steam Temperature	about 40°C (20cm away from the nozzle)
Water Type	Distilled Water or Purified Water

**Warning**

- Do not use this product near water.
- Stop using if you experience any pain or discomfort.
- Do not use if:
  - Pregnant
  - Persons with allergies, skin disease, dermatitis, sensitive skin or persons who suffered serious sunburn.
  - Persons with skin injuries, eczema, swelling, etc.
  - People who have recently had physical surgery.

**When plugging in, do not touch any metal part on the plug.**

Turn off the power and pull out the plug from power outlet when you are not using product. Failure to do so may cause fire.

Periodically clean to avoid dust accumulation. The moisture and other factors may cause insulation failure.

Do not wrap the power cord around the appliance, doing so may cause malfunction of the cord.

Always ensure the appliance is operated on an electric power source matched to the rated voltage indicated on the appliance. Ensure that the plug and appliance plug are plugged in completely. Failure to do so may result in fire, electric shock, burns or scalding.

Do not plug or unplug the plug in to power outlets and using the appliance with wet hands, doing so may result in electric shock or fire due to insulation deterioration.

**Warning**

- Do not use the appliance under the following conditions.
  - When the cord or plug is damaged or becomes hot.
  - When the plug is loose in the power outlet.
  - Do not damage, modify, unreasonably bend, pull or twist the cord.
  - Do not place anything heavy on the cord and do not pinch the cord.
  - Do not let other objects or dirt get attached to the end of plug.
- Do not use or store the appliance in a bathroom or in other rooms with high humidity, doing so may result in electric shock or fire due to insulation deterioration.

Do not immerse the appliance in water. Use the water tank to supply water to the appliance.

Do not drop the appliance. If this appliance sustains damages please do not continue to use it.

Do not insert objects in the steam outlet, and do not block the steam nozzle, doing so may result in electric shock.

Do not attempt to disassemble, or repair the appliance. Please contact the store where that appliance was purchased or an authorized service center for repairs.

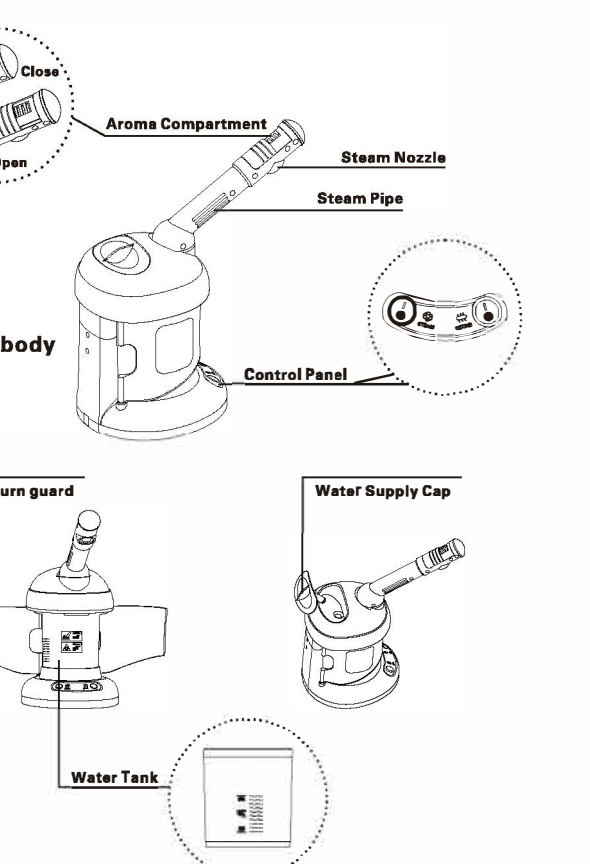
**Caution:**  
When disposing of the water after use, wait until water has completely cooled, hold the appliance so that your hands are not exposed to the hot water.

Use only distilled water or purified water. Failure to do so may result in equipment malfunction, (or in serious cases, burns or scalding).

**Facial Steamer**



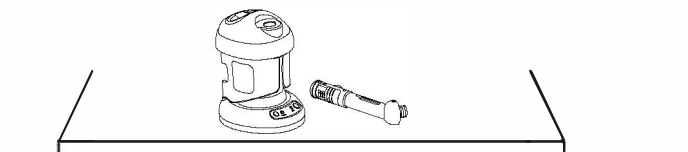
**Product Components**



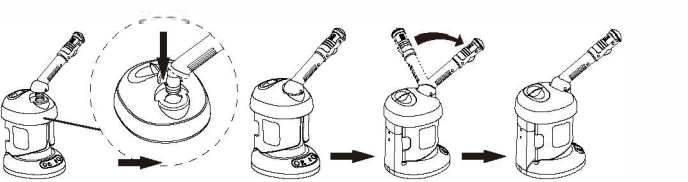
**Preparation**

When opening the steamer, you may see residual water in the water tank. This is the water left by quality inspection in the factory and it will not cause any hygienic issue.

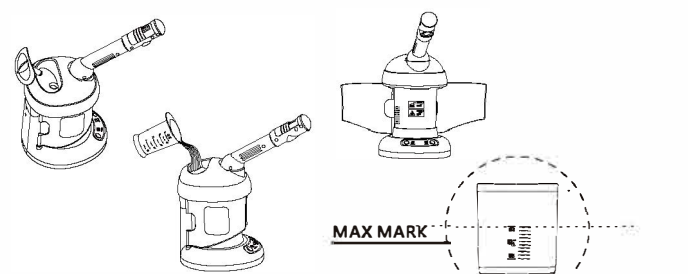
Step 1: Place the main unit on a flat level surface, such as table.



Step 2: Install the steam pipe onto the unit, as per the below diagrams. Make sure the slots are perfectly aligned.



Step 3: Open the water supply cap, fill the water supply tank with water. Make sure the water level does not exceed the MAX mark.



**User Guide**

This facial steamer may work with most types of water including distilled water, purified water, tap water, mineral water and so on. For the best performance and service life of this steamer, please use Distilled Water or Purified Water.

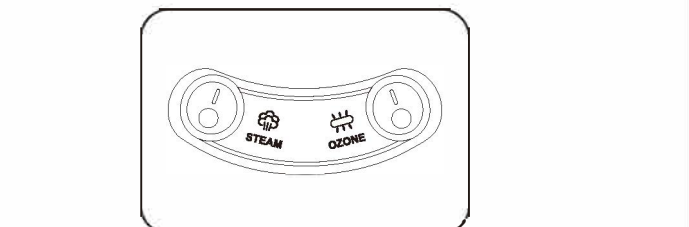
Notice: Using other types of water may cause malfunction or shorten the service life of this steamer.

Do not mix the water with any other substance, such as lotion, aromatic oil, etc. Doing so may cause burns, malfunctions, or shorten the life of the main unit.

**1. Plug in the plug into the power outlet, and the appliance will beep indicating it enters standby mode.**

2. Turn on the appliance by pressing "STEAM" button. The water will be heated and steam will be released in 5-7 minutes depending on water volume and temperature.

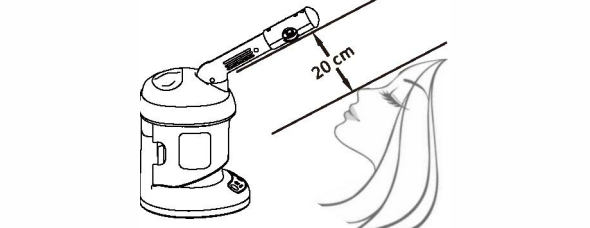
Notice: When the steam begin to spray from nozzle, it will bring out some residue water in the spray pipe, which looks like spilling, but it is safe and will not last for more than seconds, please do not worry.



3. Turn on the Ozone/Ion function by pressing "OZONE" button. The UV lamp will then illuminate and start to create Ozone and Ions, making the steam look more milky and stronger.

**4. Steam Care Guide**

Keep your face at least 20 cm from the nozzle. To ensure that the steam covers your entire face.

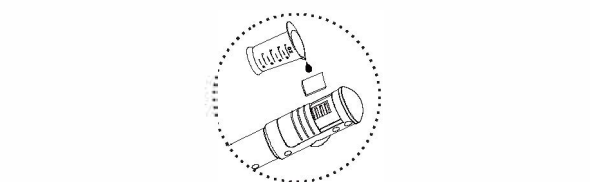


Steam will be released about 5-7 minutes after appliance turns on.

For safety purposes, this steamer is equipped with a thermo-control system. When the unit is overheated due low water level, the steamer will stop working automatically for a while to protect the unit and users.

Notice: With the water cooling down over time, the unit may start again automatically until it's being over-heated. If your steaming treatment has finished, please unplug the unit. If you need more steam, please refill the water tank and it will work as normal again.

5. Aromatherapy  
Open the aroma compartment, drop essential oil on the felt, close the compartment.

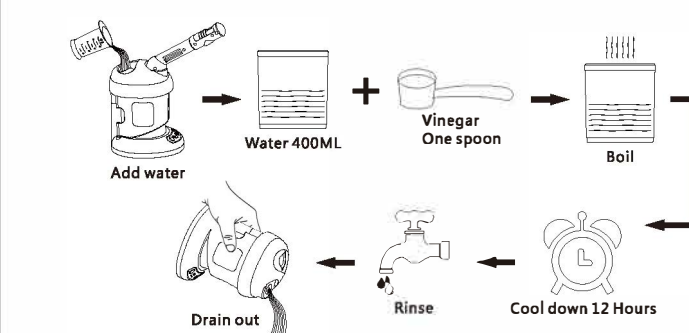


6. After Steam Care  
Shut down the appliance by pressing the "STEAM" button. It is necessary to take care of skin by moisturizing with lotion, performing cleansing, etc. Otherwise, water will evaporate from skin and cause dryness.

**Cleaning and Maintenance**

1. Clean once a month. Remove the plug from the power outlet and wipe away any dust using a dry cloth.

2. If scale is noticed in the water tank, fill up the water tank with approximately 400ml water and one spoon of vinegar. Turn on the unit by pressing "STEAM" button to let the water boil, then turn off the appliance and let it cool off. After approximately 12 hours, discard the vinegar water and rinse the tank with clean water.



**Warning regarding your skin**

- Excessive use is detrimental to the skin.
- If the skin feels uncomfortable, stop use immediately.
- Basic skin care is required after using the steam, otherwise the steam may cause the moisture in your skin to evaporate easily, drying out skin.

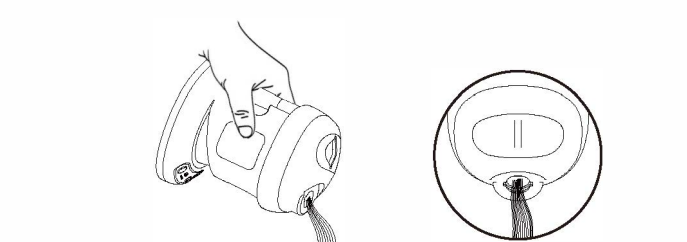
**After Use**

Caution: Be sure to discard the residual water from water tank every time after use. Failure to do so may cause adhering of water stains or unusual odors.

1. Leave the appliance alone to cool for at least 10 minutes.

2. Disconnect the plug from power outlet, remove the steam pipe or spray hood from the appliance, then pour out the water in the water tank through the steam pipe hole.

3. As picture indicates, hold the main unit so that your hands are not exposed to the hot water. Failure to do so may result in burns.



4. When the appliance is not using in a long term (more than several weeks), the water should be completely removed from water tank and steam pipe.

**Maintenance records**

Repair date:	Date of inspection:
Maintenance units:	Repairer's signature:

